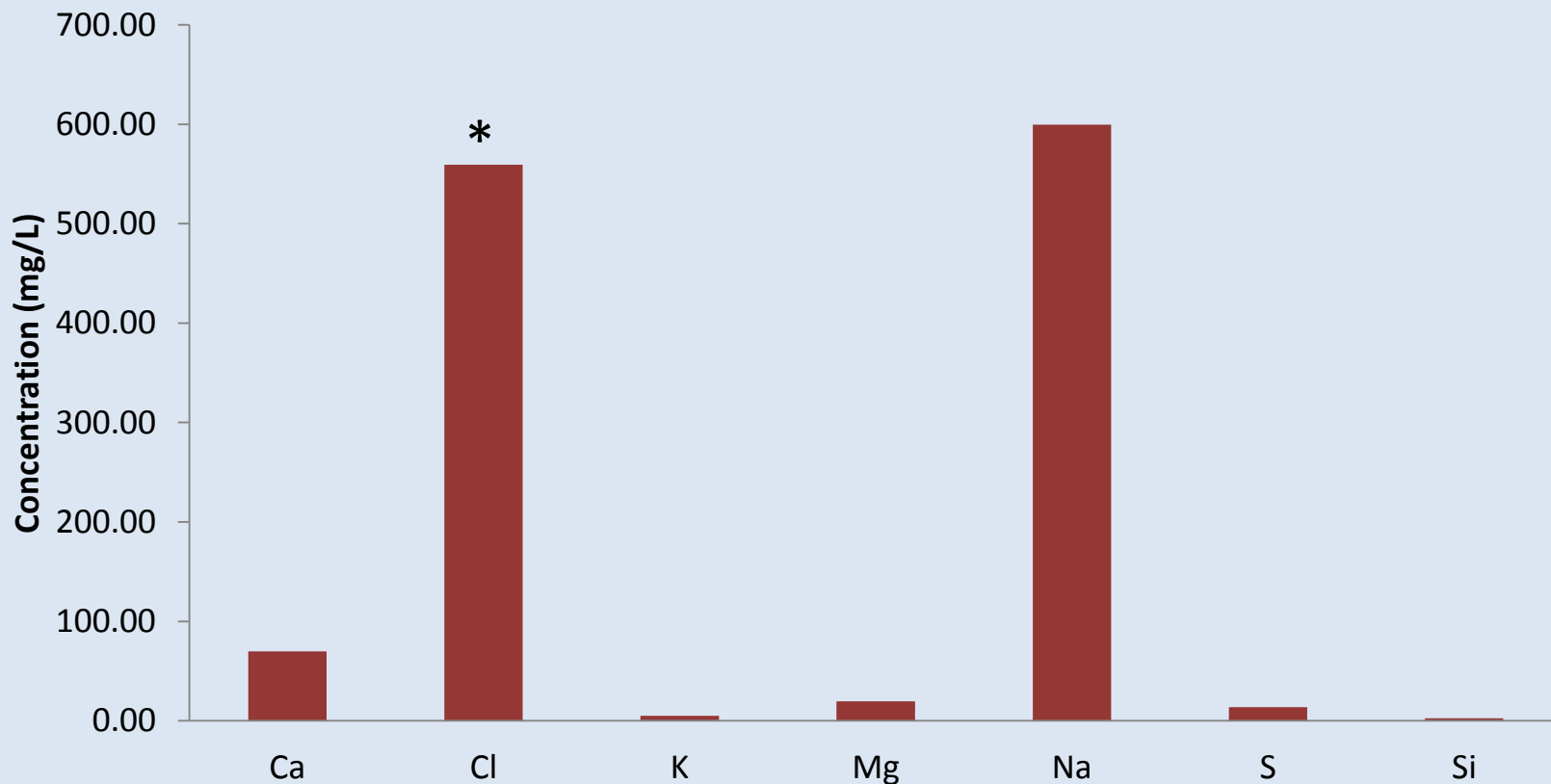


Submitting Team: Cornell iGEM

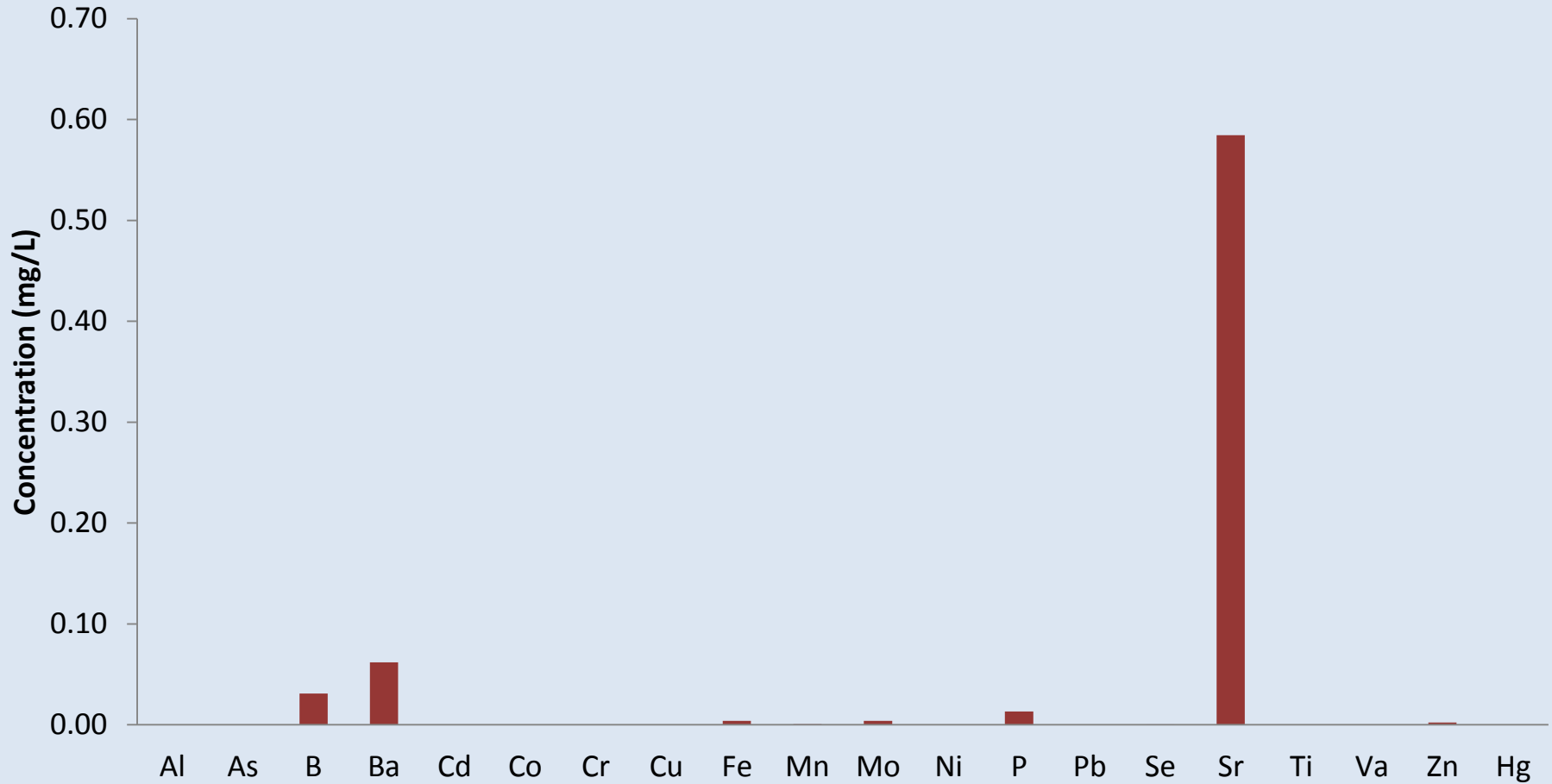
Sample Location: Fall Creek, NY

Major Metals



* Indicates that concentration exceeds EPA maximum contaminant level for potable water.

Minor Metals



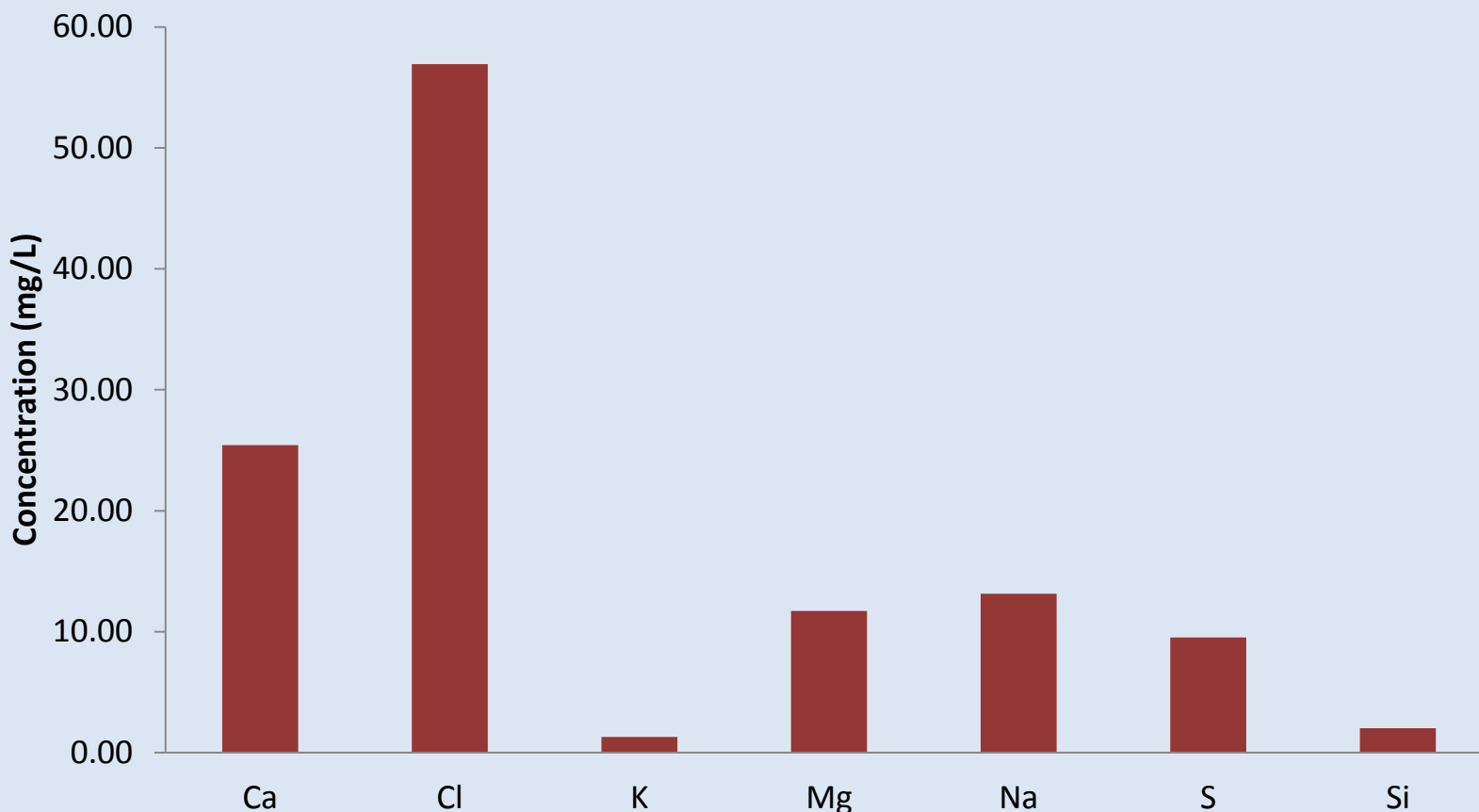
* Indicates that concentration exceeds EPA maximum contaminant level for potable water.

Disclaimer: These tests are by no means meant to substitute professional water quality testing. They are simply meant to inform the submitter of results and to determine if future water quality testing is warranted.

Submitting Team: RHIT iGEM

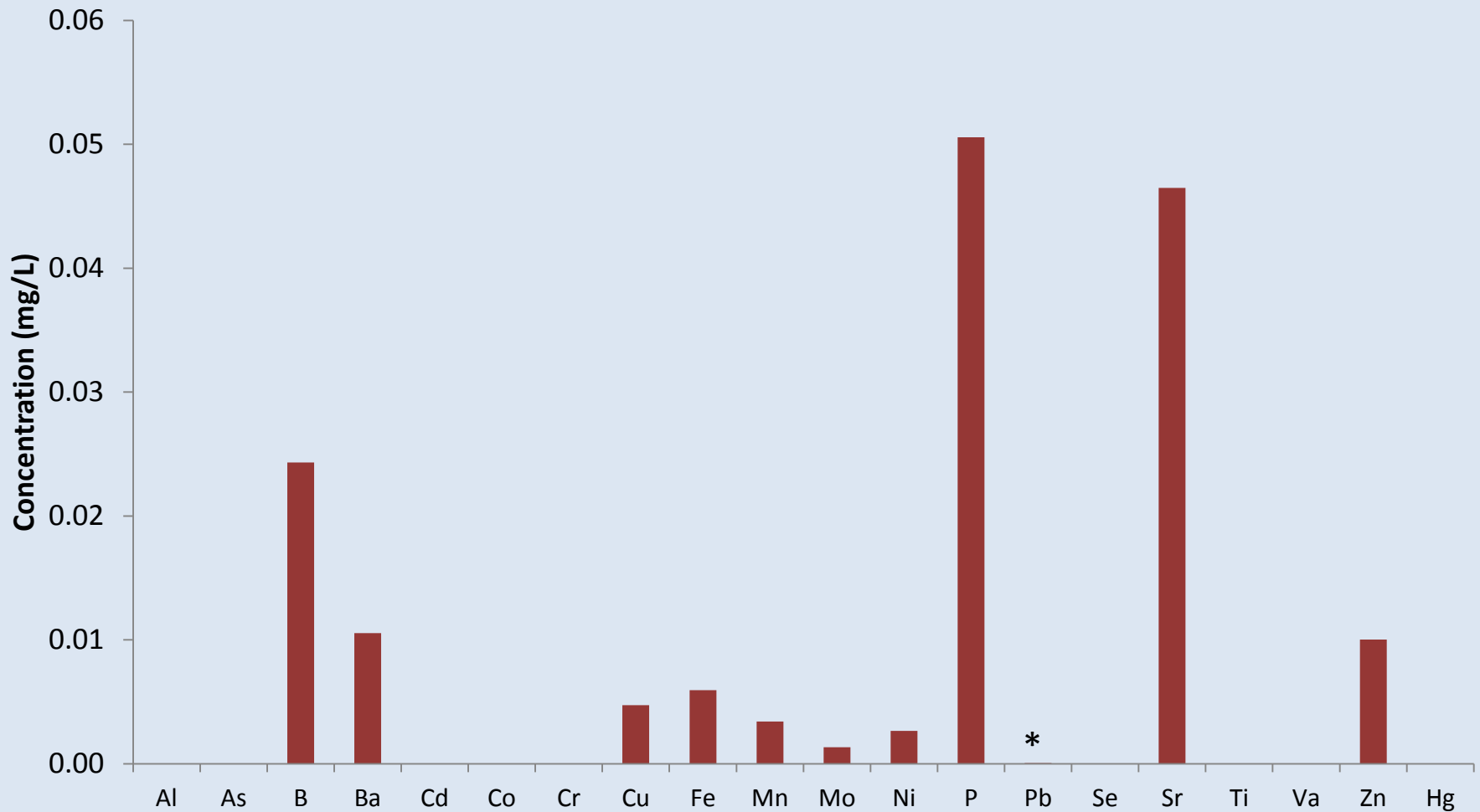
Sample Location: Lost Creek, IN

Major Metals



* Indicates that concentration exceeds EPA maximum contaminant level for potable water.

Minor Metals



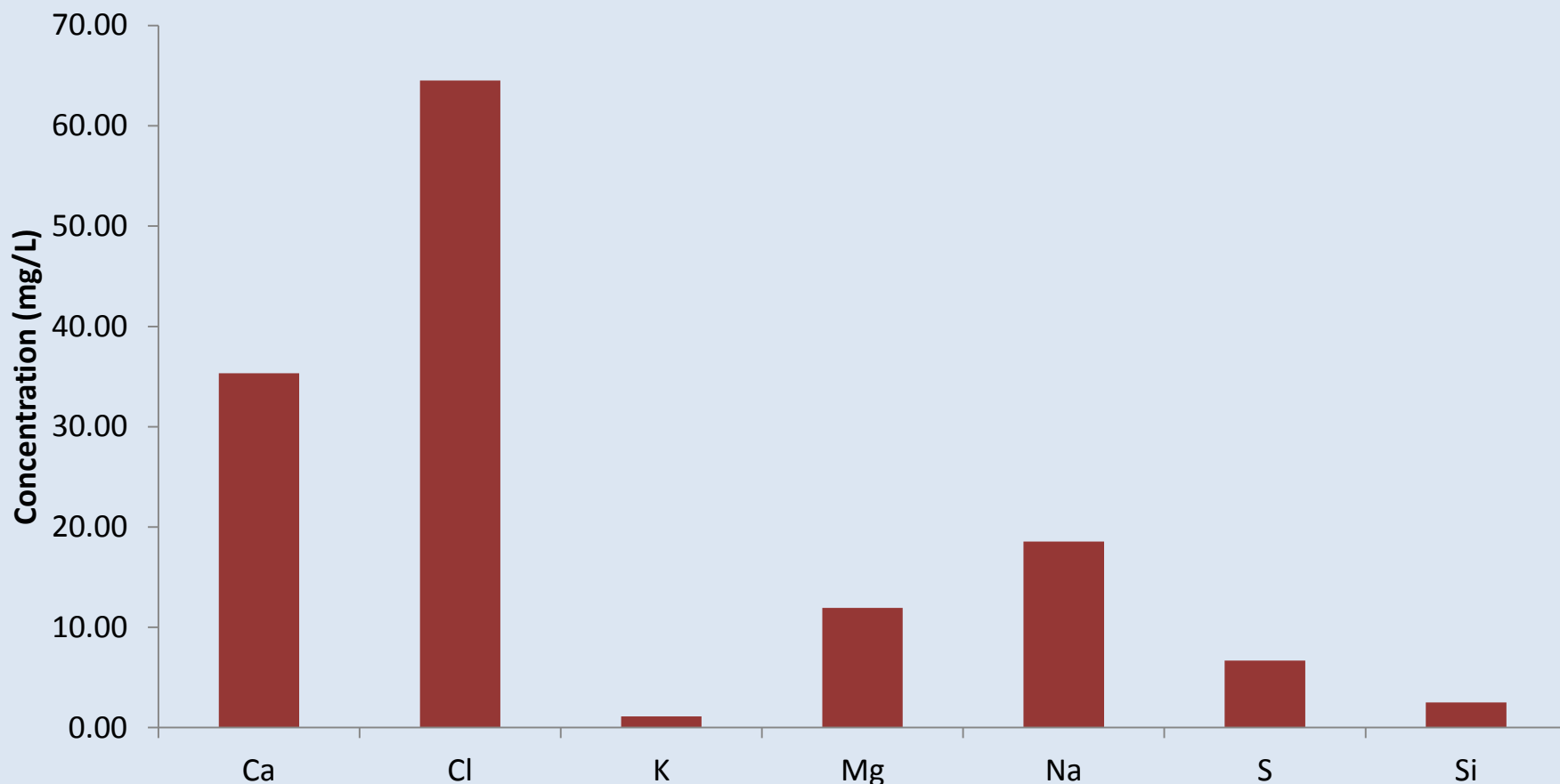
* Indicates that concentration exceeds EPA maximum contaminant level for potable water.

Disclaimer: These tests are by no means meant to substitute professional water quality testing. They are simply meant to inform the submitter of results and to determine if future water quality testing is warranted.

Submitting Team: IvyTech iGEM

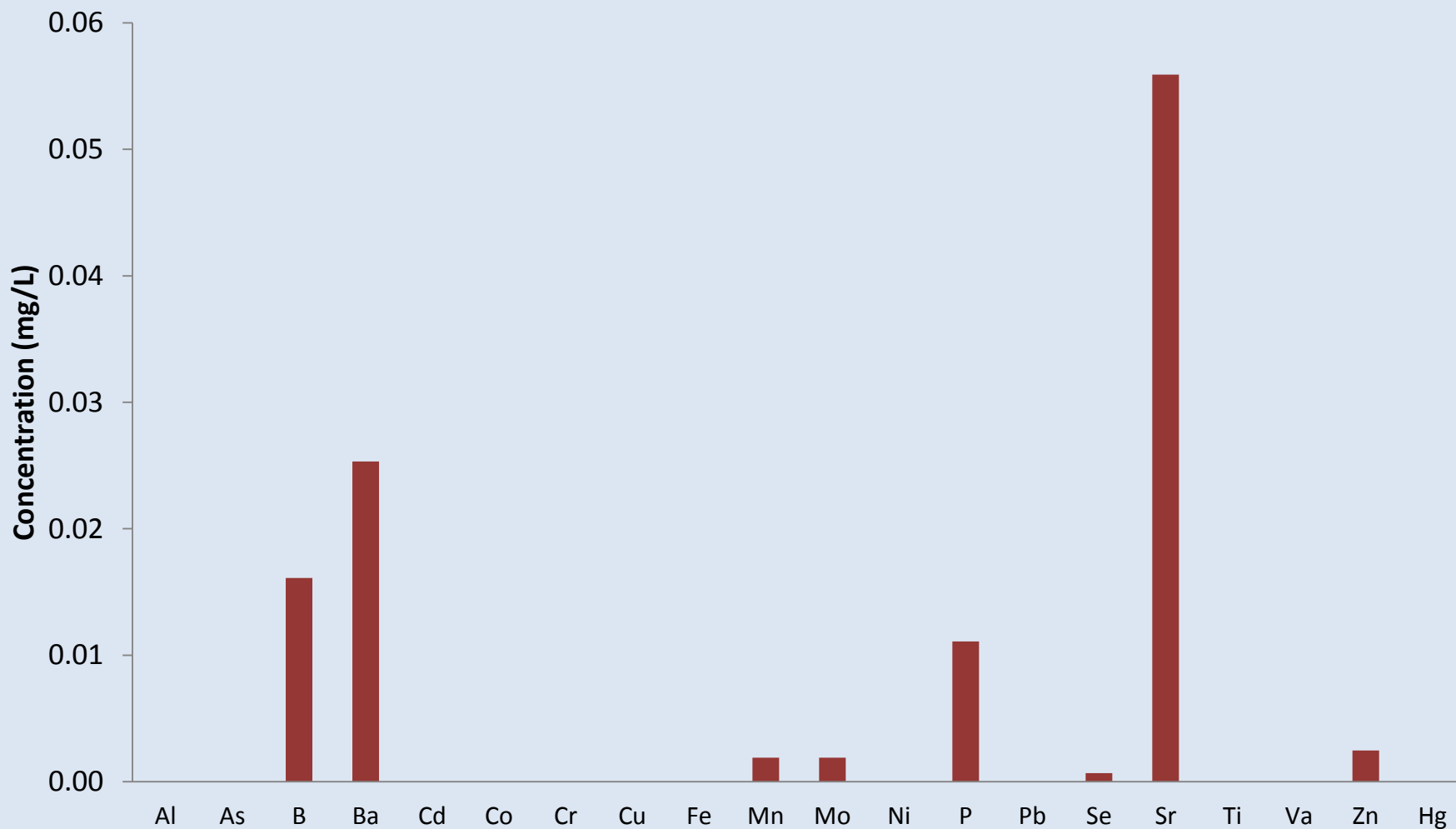
Sample Location: St. Joe River, IN

Major Metals



* Indicates that concentration exceeds EPA maximum contaminant level for potable water.

Minor Metals



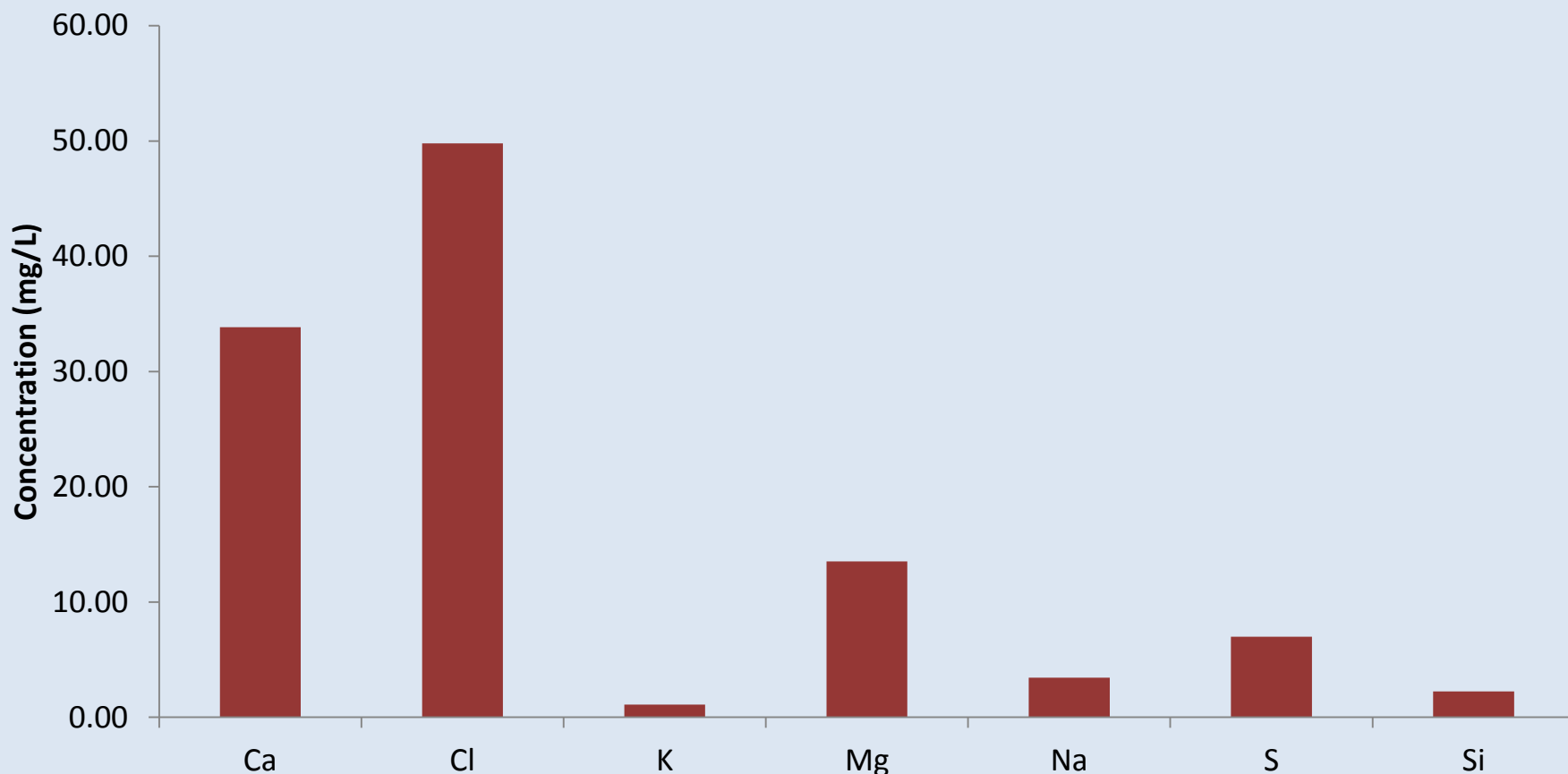
* Indicates that concentration exceeds EPA maximum contaminant level for potable water.

Disclaimer: These tests are by no means meant to substitute professional water quality testing. They are simply meant to inform the submitter of results and to determine if future water quality testing is warranted.

Submitting Team: IvyTech iGEM

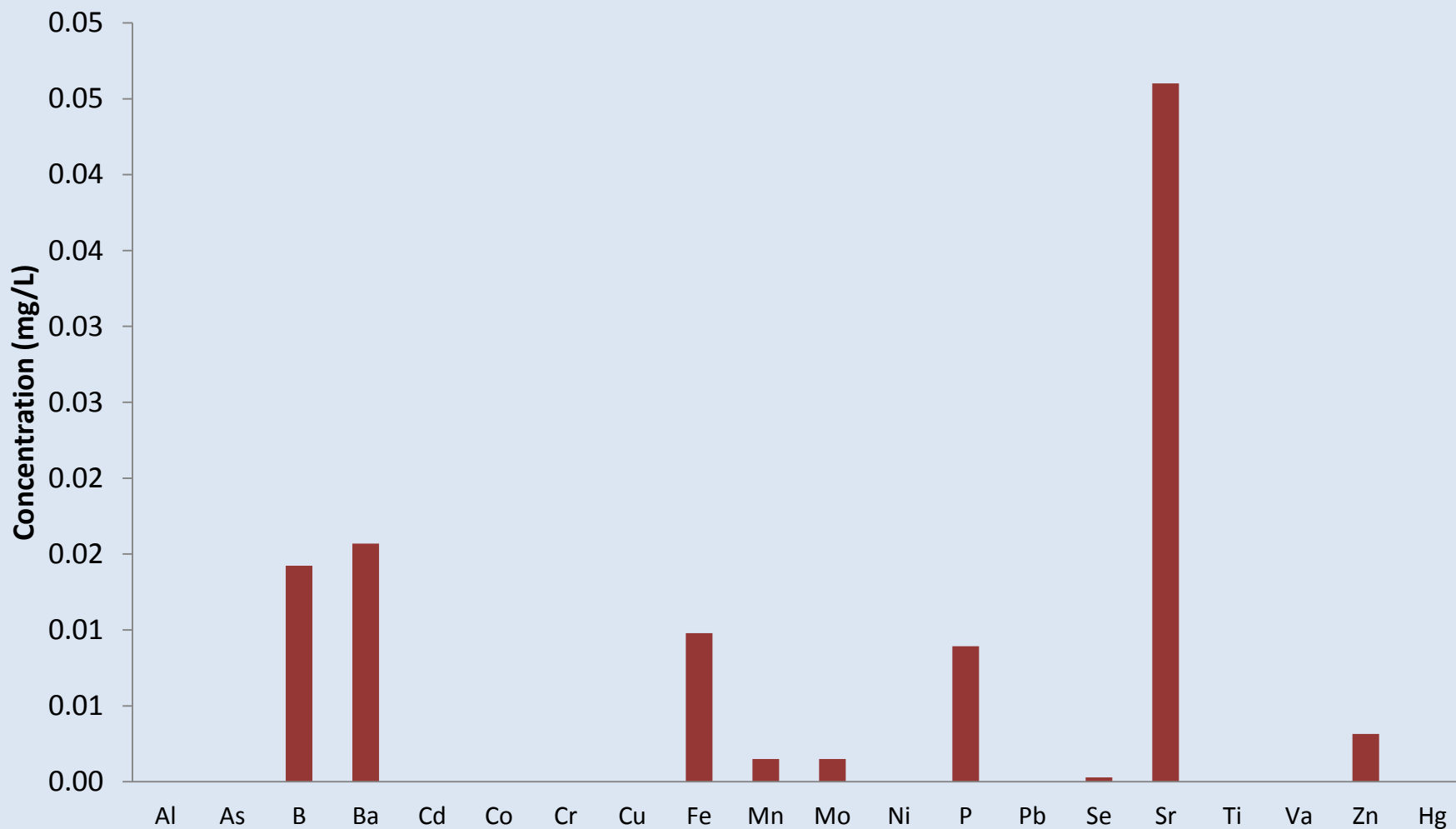
Sample Location: Potato Creek, IN

Major Metals



* Indicates that concentration exceeds EPA maximum contaminant level for potable water.

Minor Metals



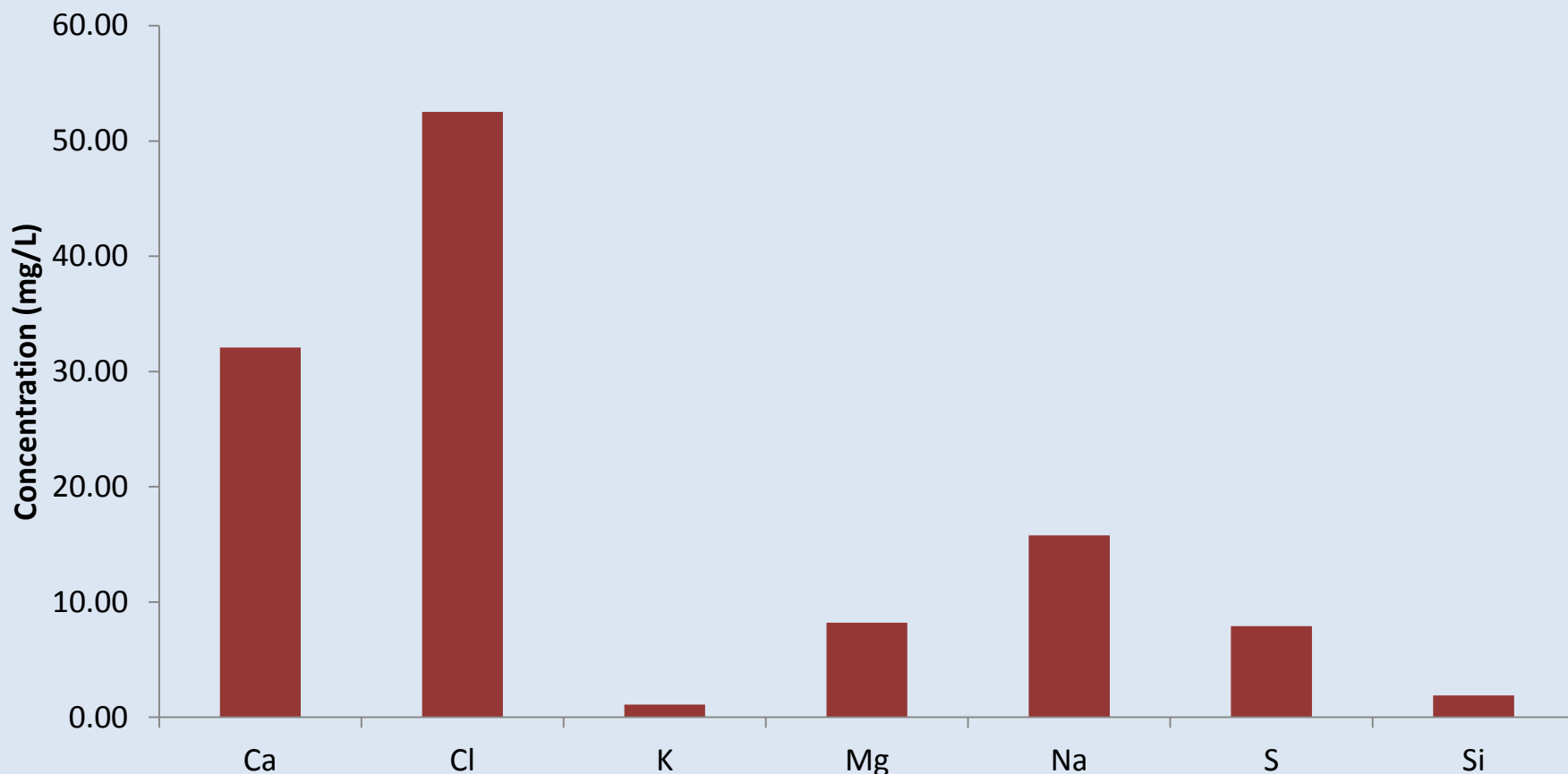
* Indicates that concentration exceeds EPA maximum contaminant level for potable water.

Disclaimer: These tests are by no means meant to substitute professional water quality testing. They are simply meant to inform the submitter of results and to determine if future water quality testing is warranted.

Submitting Team: BYU iGEM

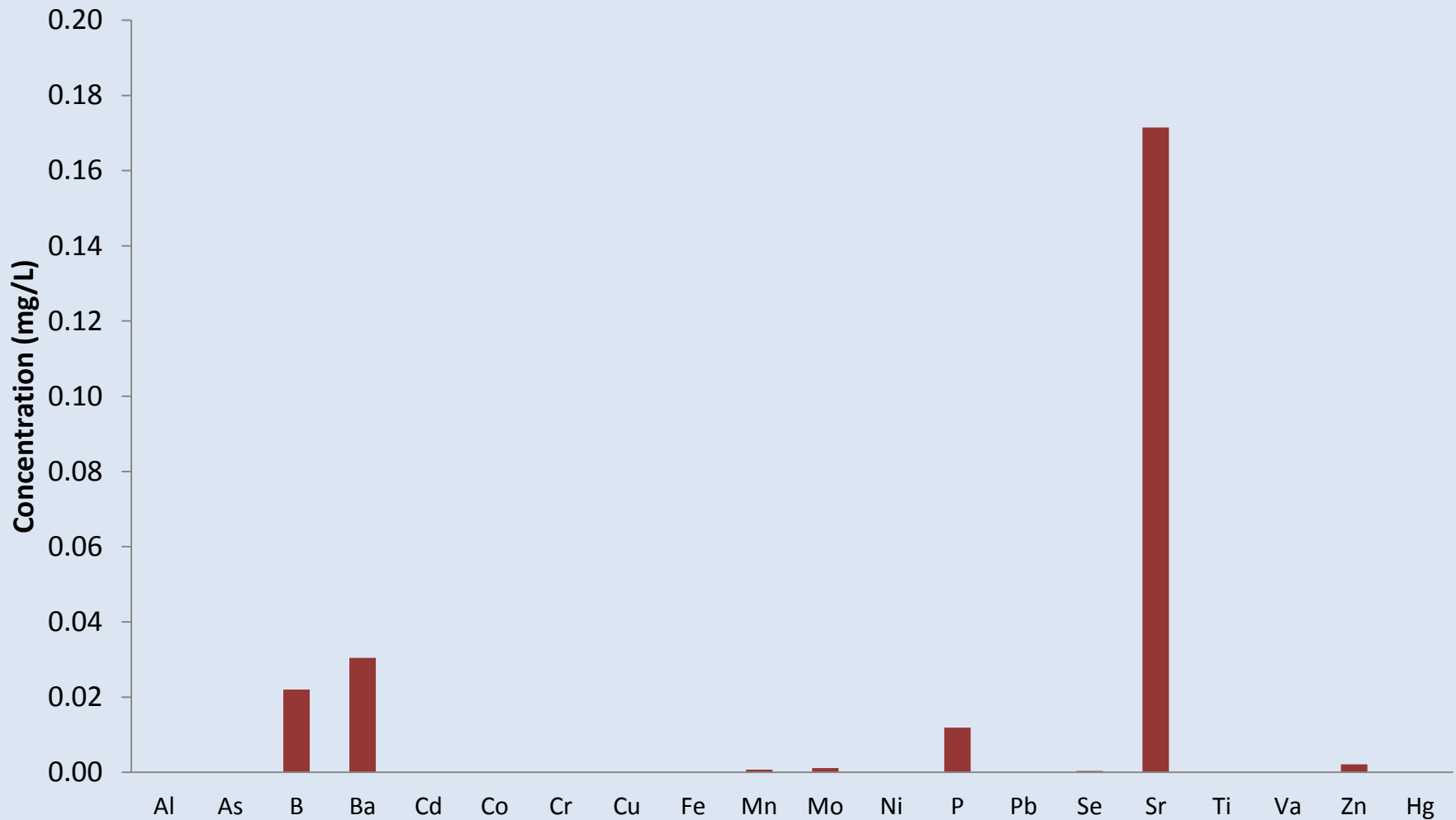
Sample Location: Provo River, UT

Major Metals



* Indicates that concentration exceeds EPA maximum contaminant level for potable water.

Minor Metals



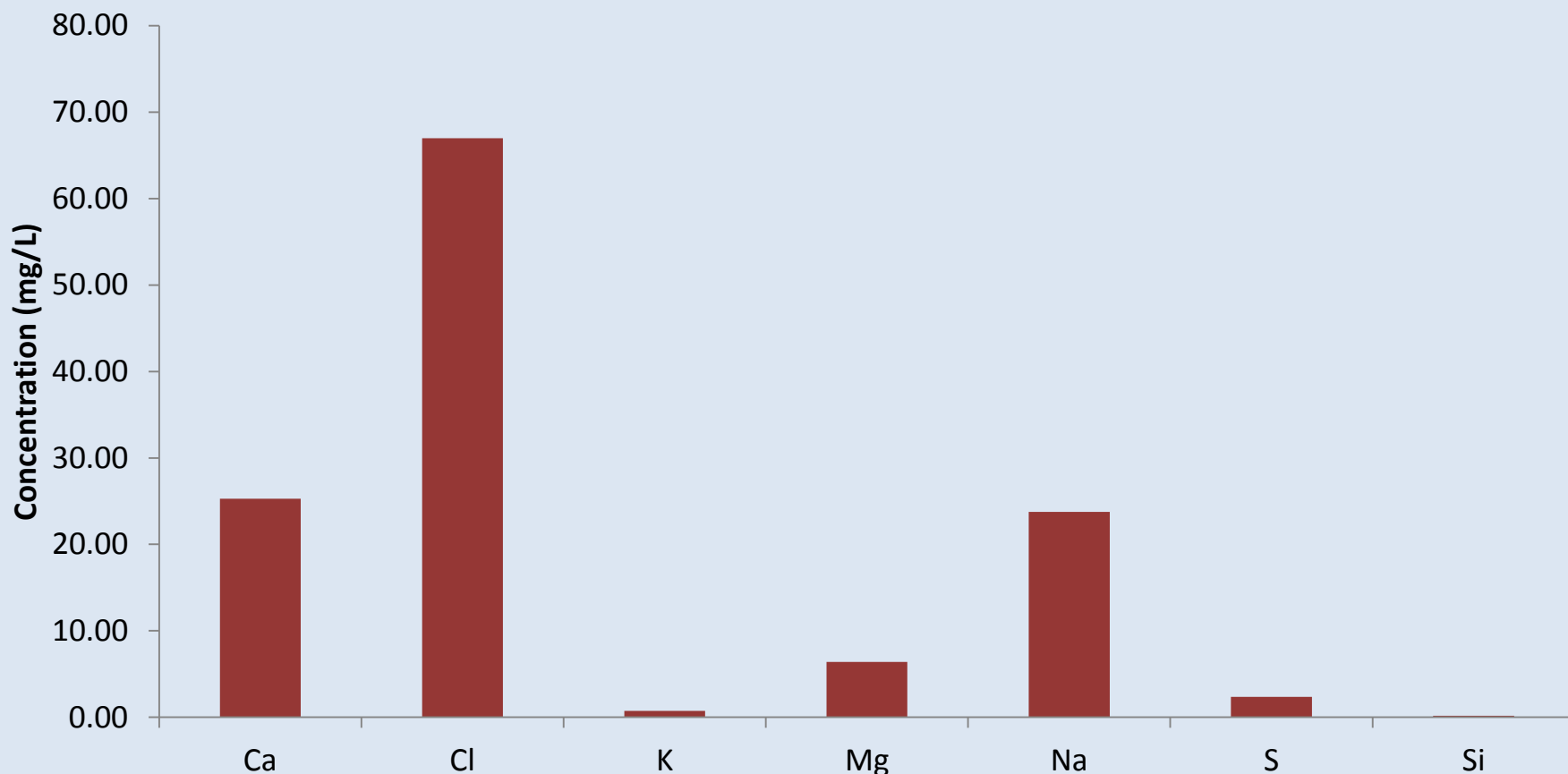
* Indicates that concentration exceeds EPA maximum contaminant level for potable water.

Disclaimer: These tests are by no means meant to substitute professional water quality testing. They are simply meant to inform the submitter of results and to determine if future water quality testing is warranted.

Submitting Team: Yale iGEM

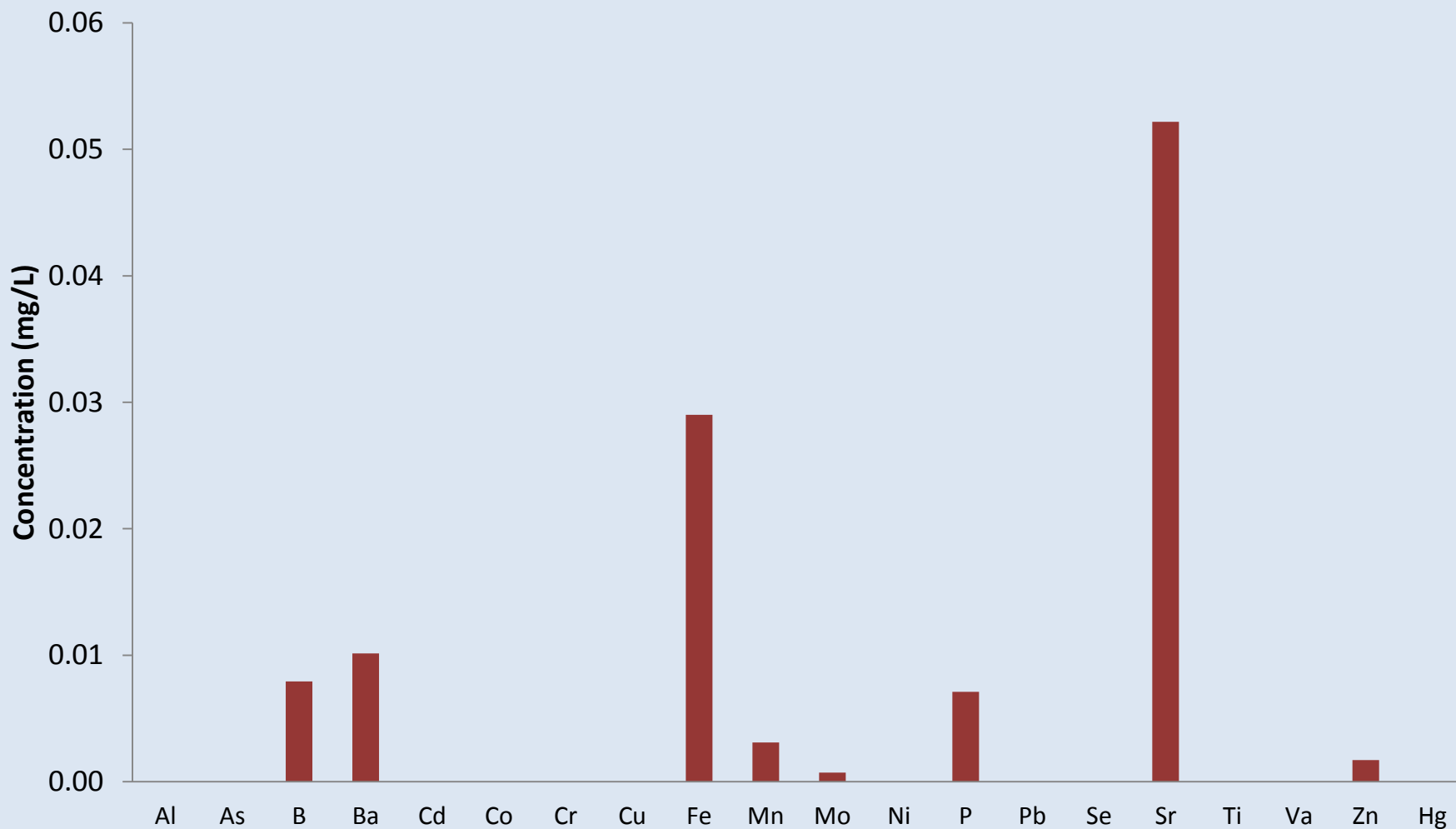
Sample Location: Mill River, NJ

Major Metals



* Indicates that concentration exceeds EPA maximum contaminant level for potable water.

Minor Metals



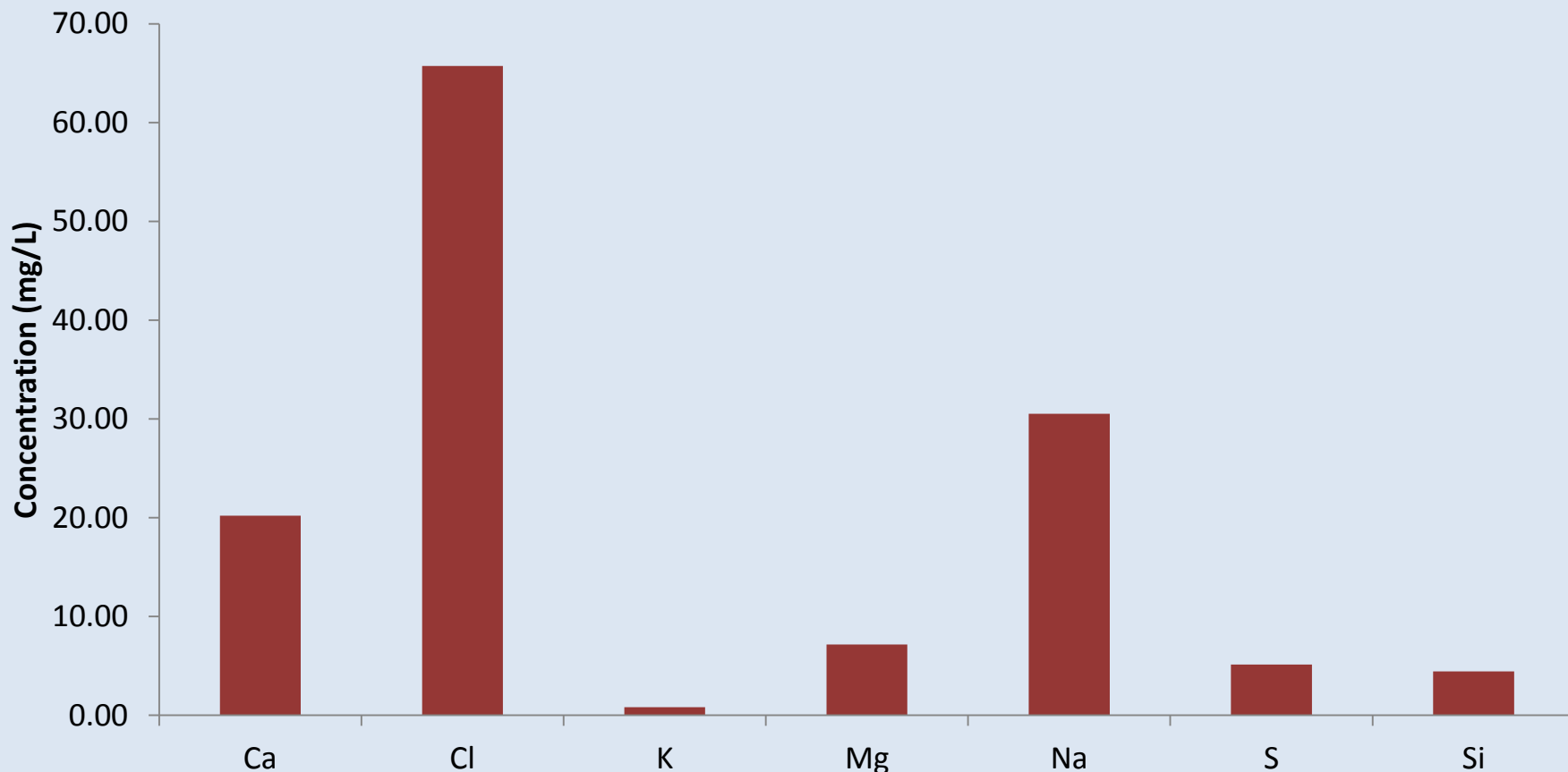
* Indicates that concentration exceeds EPA maximum contaminant level for potable water.

Disclaimer: These tests are by no means meant to substitute professional water quality testing. They are simply meant to inform the submitter of results and to determine if future water quality testing is warranted.

Submitting Team: UCSF/UCB iGEM

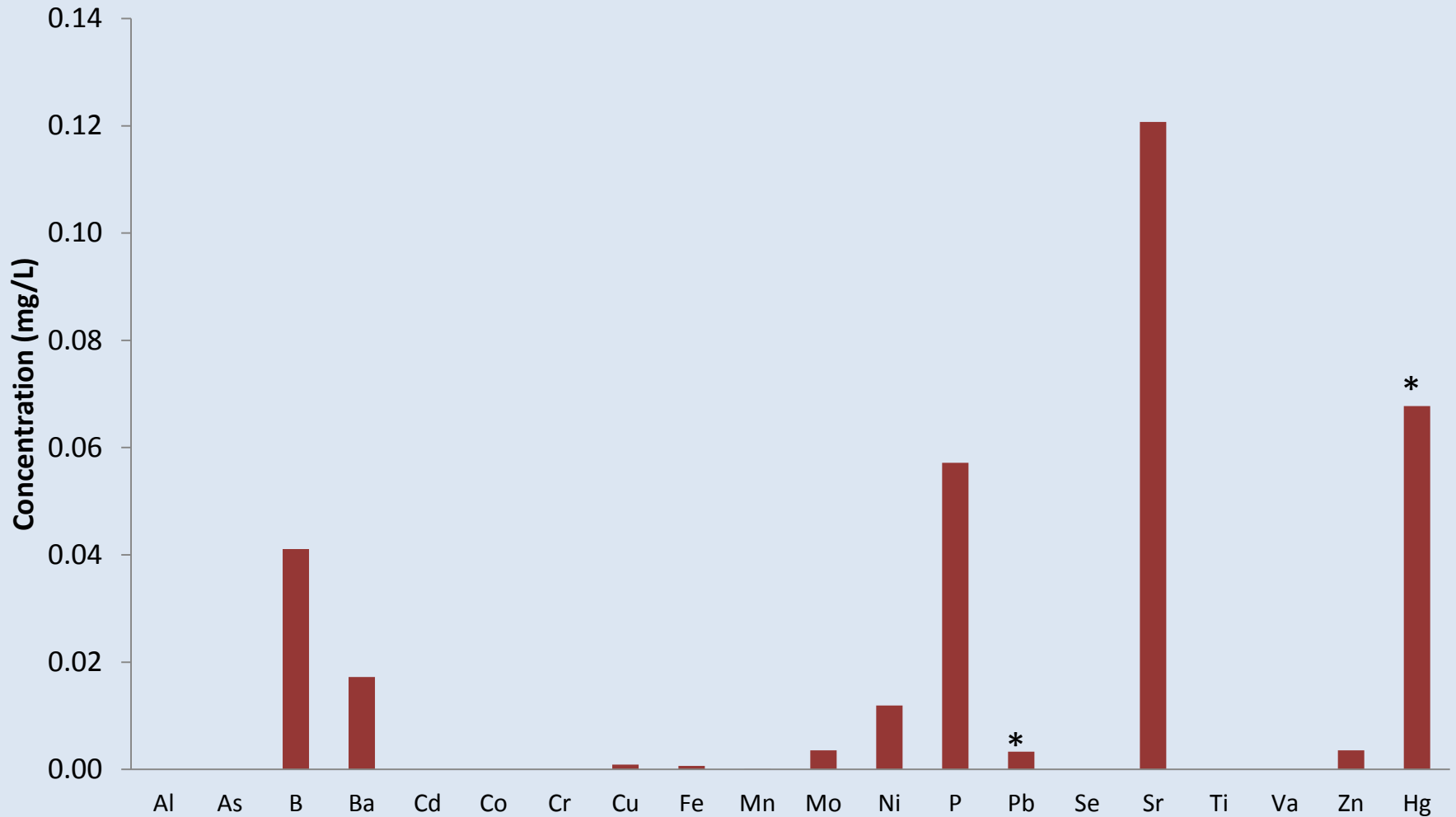
Sample Location: Strawberry Creek, CA

Major Metals



* Indicates that concentration exceeds EPA maximum contaminant level for potable water.

Minor Metals



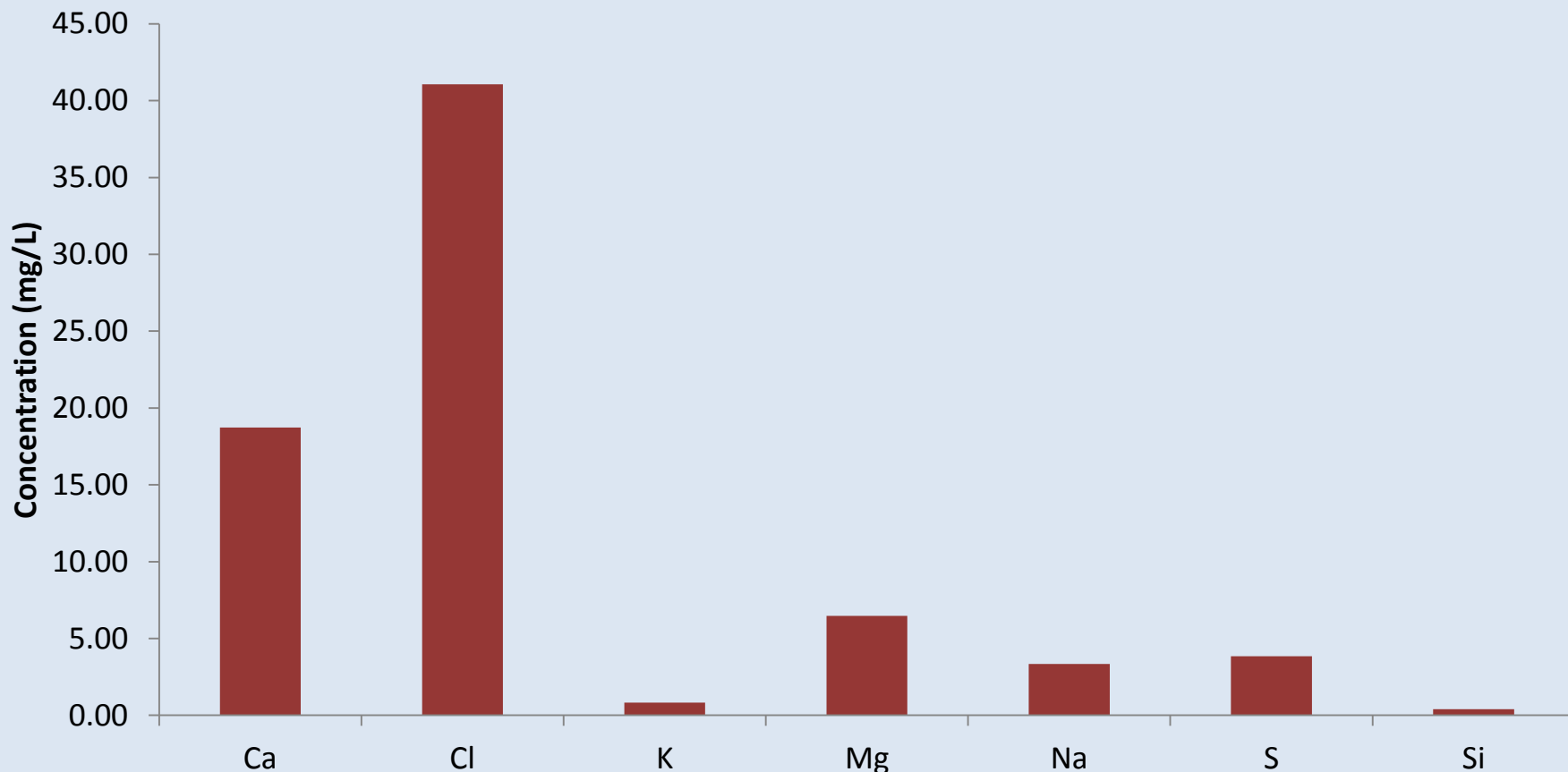
* Indicates that concentration exceeds EPA maximum contaminant level for potable water.

Disclaimer: These tests are by no means meant to substitute professional water quality testing. They are simply meant to inform the submitter of results and to determine if future water quality testing is warranted.

Submitting Team: Northwestern iGEM

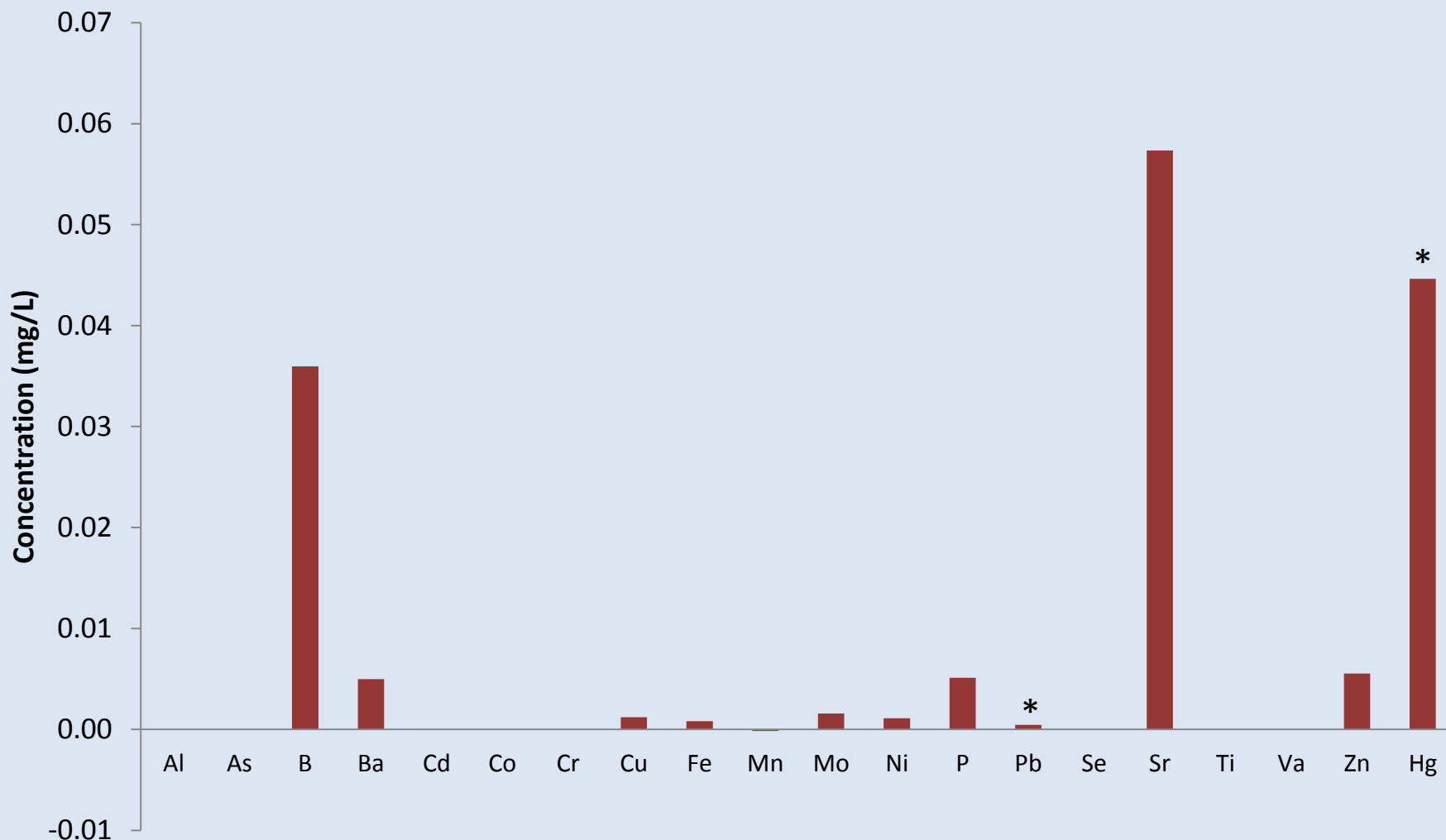
Sample Location: Lake Michigan, MI

Major Metals



* Indicates that concentration exceeds EPA maximum contaminant level for potable water.

Minor Metals



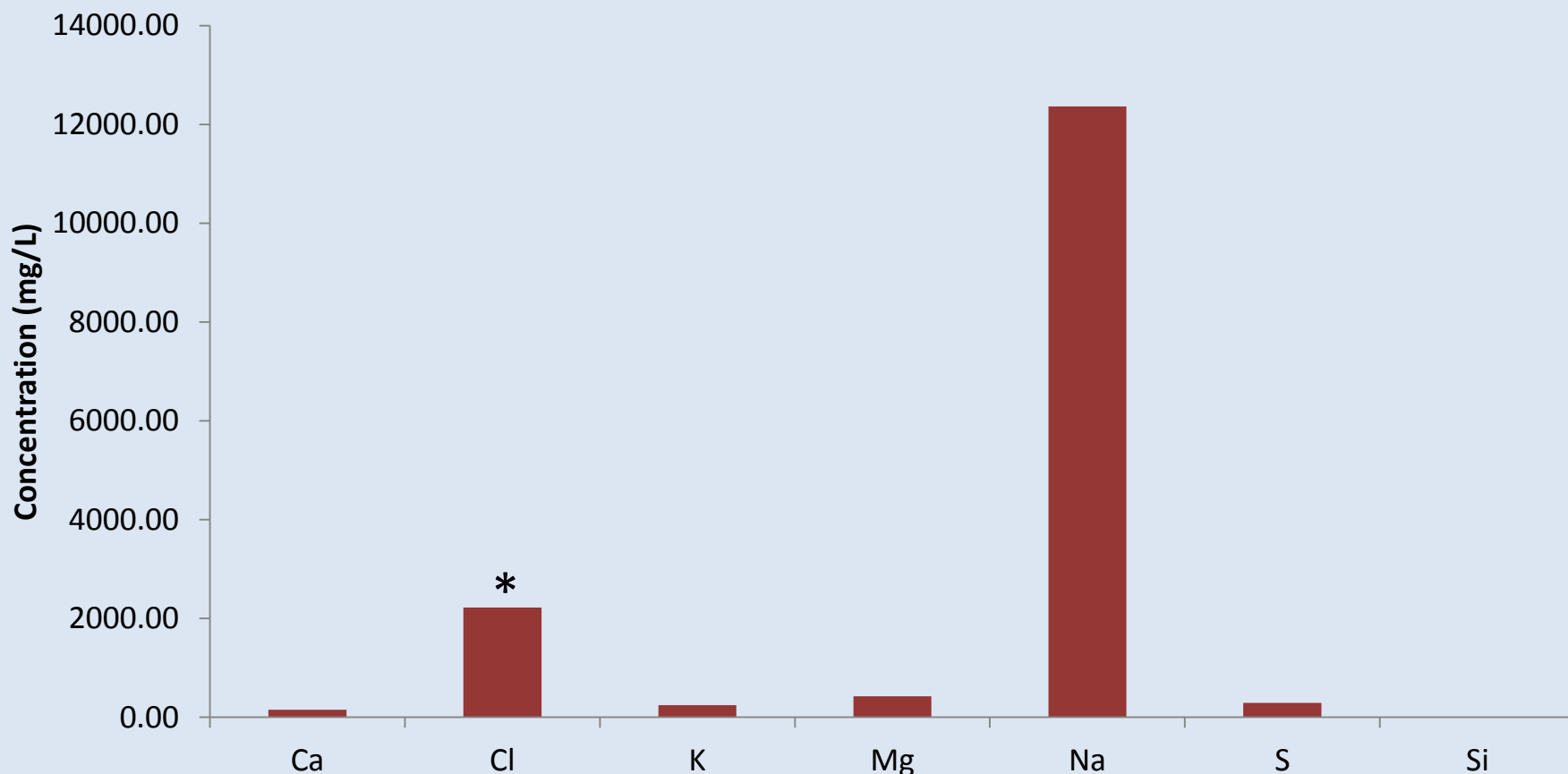
* Indicates that concentration exceeds EPA maximum contaminant level for potable water.

Disclaimer: These tests are by no means meant to substitute professional water quality testing. They are simply meant to inform the submitter of results and to determine if future water quality testing is warranted.

Submitting Team: UCSC iGEM

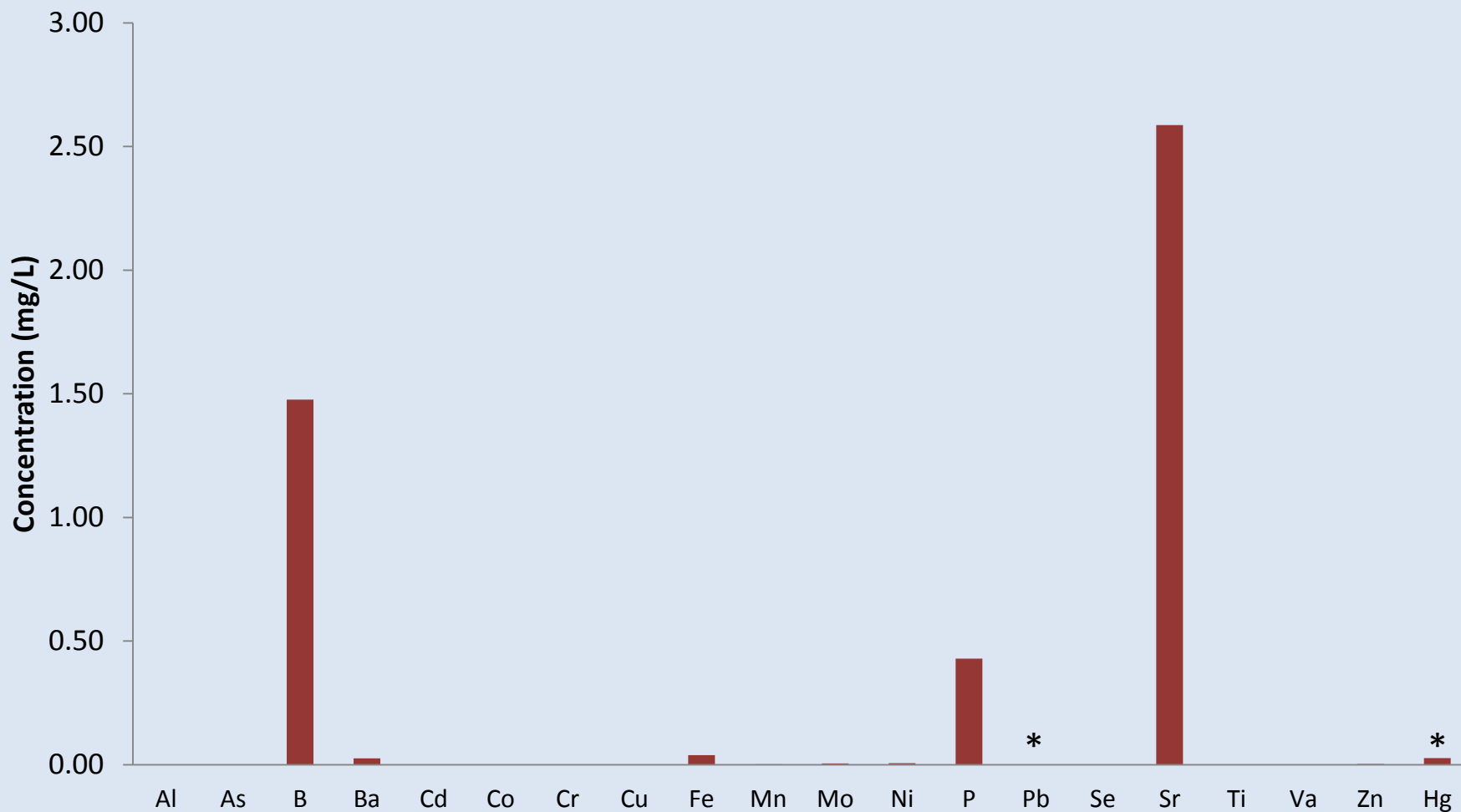
Sample Location: Guadalupe River, CA

Major Metals



* Indicates that concentration exceeds EPA maximum contaminant level for potable water.

Minor Metals



* Indicates that concentration exceeds EPA maximum contaminant level for potable water.

Disclaimer: These tests are by no means meant to substitute professional water quality testing. They are simply meant to inform the submitter of results and to determine if future water quality testing is warranted.